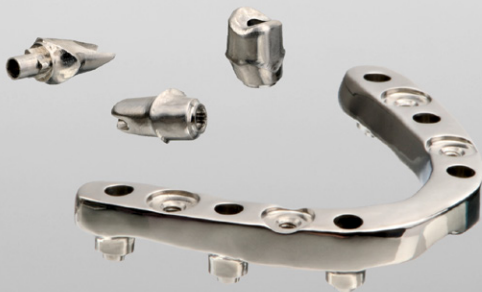


INFINIDENT

SOLUTIONS



INDIVIDUAL TI

Individual, one-piece abutments or bars on implants made from an ELI titanium alloy TiAl6V4 (Grade 5)

CTE (20 – 600 °C)*

$10.3 \cdot 10^{-6} \cdot K^{-1}$

VICKERS*

330 HV

INDIVIDUAL TI



Order Number 001-3052EN

INDICATIONS

One-piece abutments and screw-retained bars for the most common implant systems.

BENEFITS

- + Perfectly suited for implant-supported restorations due to the excellent mechanical properties of the alloy (grade 5)
- + Perfect biocompatibility and corrosion resistance
- + Excellent adhesive bond with titanium ceramics
- + Semi-opacity to allow thorough x-ray check-up for patients

REFERENCES

Best aesthetic results are achieved by veneering with a veneering ceramic suitable for titanium. Please always observe the processing instructions of the respective manufacturer.

COMPOSITION*

Ti	89.4 %
Al	6.2 %
V	4.0 %
Other	<0.4 %

* typical material characteristics.
The published information of the respective material manufacturer shall apply.